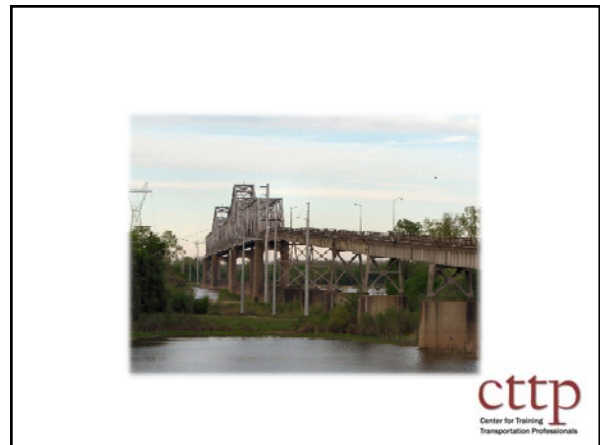





- Technician Training/Certification
 - Laboratory Inspection/Certification
- 
- A smaller version of the cttp logo is located in the bottom right corner of the slide.



- ### Courses
- Aggregates
 - Soils
 - Concrete
 - Field Testing
 - Strength Testing
 - Asphalt
- 
- A smaller version of the cttp logo is located in the bottom right corner of the slide.

Courses

- 2006
 - Concrete Strength Testing (Feb 2006)
 - Roadway Construction Control (Nov 2006)
- 2007
 - Concrete Patching (Oct 2007)
- 2008
 - ACI Aggregate Testing Technician (Apr 2008)
 - Stream Stability and Bridge Scour (Oct 2008) - NHI
 - NPDES (Dec 2008)
- 2009
 - Bridge Scour: Countermeasures (March 2009) - NHI
 - ACI Associate Concrete Inspector (Oct 2009) - ACI



Courses

- Concrete Patching (Oct 2007)
- NPDES (Dec 2008)



Additional Developed Courses

- On-line Courses
 - Math Modules
 - Each module for math represented in training class
 - Aggregates
 - AASHTO Specifications



Classes - Recertification

- Complete Class
- Written Exam
- Performance Exam



Zebra Printer



www.cttp.org

